

WiFi-P

Pulse Water Meter with Wifi Pulse Sensor



- In this variation we will use Water Meter with Pulse output wires which will be connected to the WiFi Pulse Sensor and the water meter sends pulse signals via pulse output wires to the WiFi Pulse Sensor, (the pulses are if the water flow volume from the water meter crosses 1 Ltr, the meter will give 1 pulse to the IoT Sensor).
- The WiFi Pulse Sensor receives the pulses and in return transmits the same to the cloud server using the local available wifi network.
- The WiFi Pulse Sensor runs on a 3x AA batteries which can last upto 2 Years.
- The WiFi Pulse Sensor can record pulse data every minute (configurable)
- The WiFi Pulse Sensor has an internal Flash Memory
- 1 One WiFi Pulse Sensor can be connected with 2 Two Water Meters.
- The Cloud Server receives all the pulse data with time stamp via Wifi Network from the WiFi Pulse Sensor wirelessly.
- The Cloud Server will analyse the data and reflect the same in the mobile app interface or web dashboard in respective user as well as admin or super admin accounts.

TYPICAL INSTALLATION

8 Storey High Rise Apartment
with 2 inlets into each home.

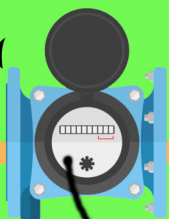
1. Mechanical Water Meter with Pulse Output
2. WiFi Pulse Sensor
4. Cloud Server Database
4. Cloud Admin Account
5. User Account

**Mechanical Water Meter With
Register Counter + Pulse Output**
1 Pulse = 1 Ltr



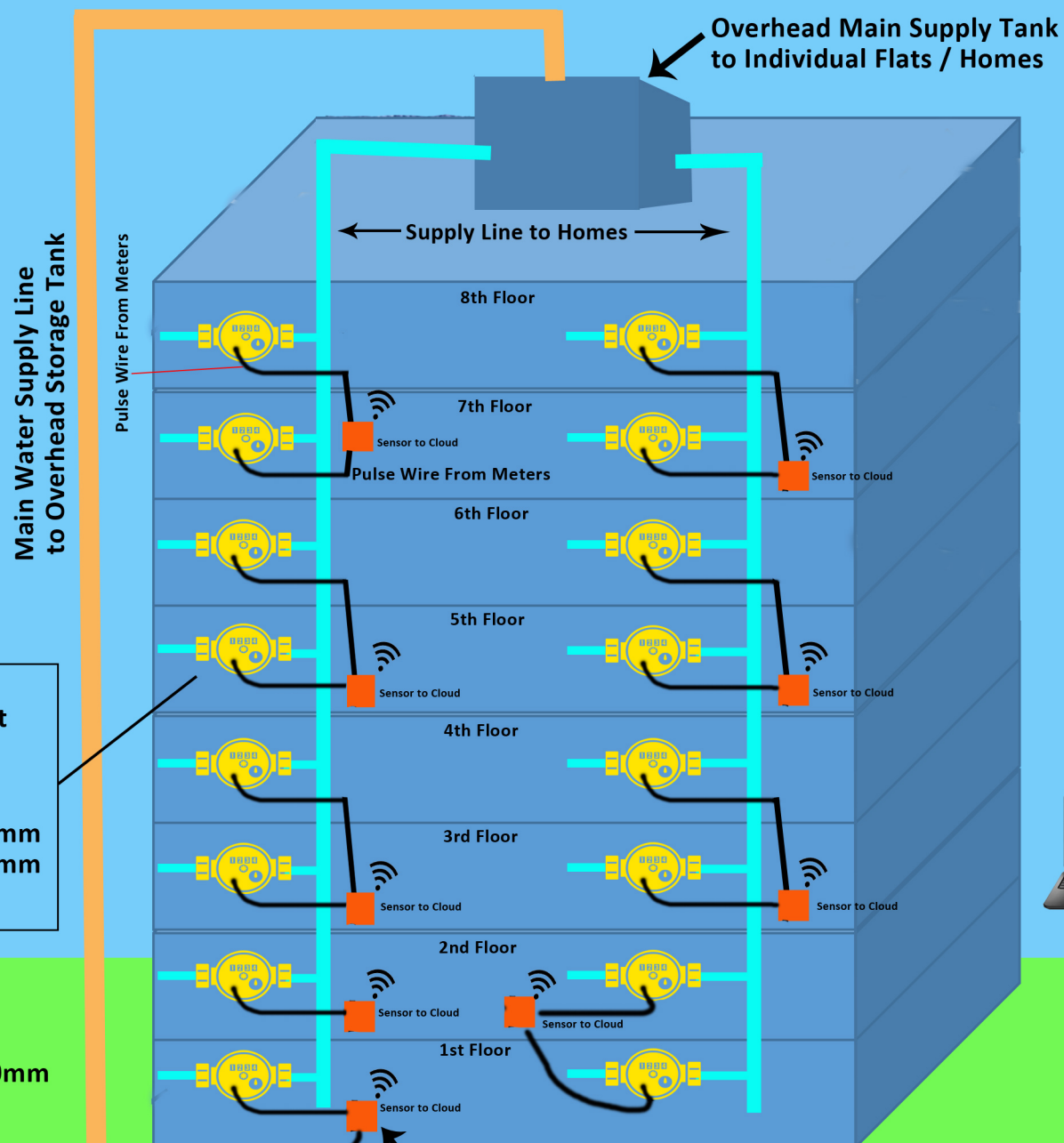
Sizes Available :-
15mm, 20mm, 25mm
32mm, 40mm, 50mm

**Supply Line Water Meter
with Pulse Output**
1 Pulse = 100 Ltrs
Size Available From :- 40 -500mm



Pulse Wire

Variation : WiFi-P



Cloud Server



USERS



WiFi Pulse Counter Sensor Battery Operated AAx3
Battery Life : 2 Years, Size : 4 x 4 x 1 CMS
1 Sensor can connect with upto 2 Meters
Transmits Meter Data directly to cloud via Local WiFi Network
Min Transmission Time Interval : 1 Mins

